

# ➤ Nozzle systems for surface treatment

## Series 676 Easy-Clip



### Features:

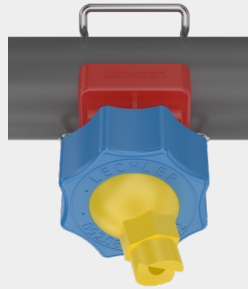
- Simple, quick nozzle assembly without the need for tools
- All-round 30° swivelling
- Easy adjustment and cleaning

### Applications:

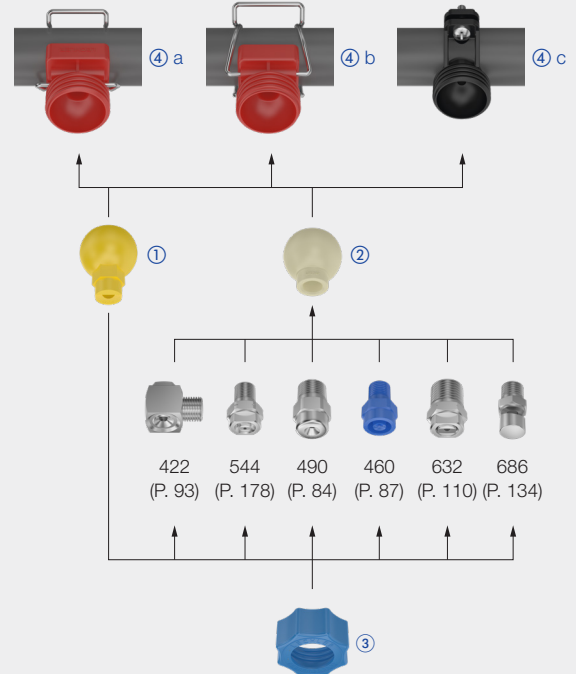
- Degreasing
- Phosphating in surface treatment
- Industrial cleaning
- Container washers

### Materials:

- Clamp: Stainless steel 301
- Gasket: EPDM
- Cylinder pin, screw, screw unit: Stainless steel 316L
- Body, retaining nut: Polypropylene, glass fibre reinforced
- Ball nozzle, ball joint: Polypropylene



### Assembly example



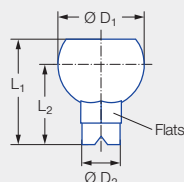
## Sets – series 676 Easy-Clip

Designation	Spray angle	Ordering no.	Nozzle Color	V̇ [l/min]				
				p [bar]				
				0.5	1.0	1.5	2.0	2.5
<b>Set 1</b> consisting of: Ball nozzle Single clamp for 1 1/4" pipe Retaining nut	60°	<b>676.724.53.31</b>	Grey	3.15	4.45	5.45	<b>6.30</b>	7.04
		<b>676.764.53.31</b>	Brown	4.00	5.66	6.93	<b>8.00</b>	8.94
		<b>676.804.53.31</b>	Purple	5.00	7.07	8.66	<b>10.00</b>	11.18
		<b>676.844.53.31</b>	Yellow	6.25	8.84	10.83	<b>12.50</b>	13.98
		<b>676.884.53.31</b>	Red	8.00	11.31	13.85	<b>16.00</b>	17.89
		<b>676.904.53.31</b>	Blue	9.10	12.87	15.76	<b>18.20</b>	20.35
		<b>676.924.53.31</b>	Green	10.00	14.14	17.32	<b>20.00</b>	22.36

Designation	Ordering no.	Ball Color	BSPP	Matches series
<b>Set 2</b> consisting of: Ball joint Single clamp for 1 1/4" pipe Retaining nut	<b>092.081.53.AD</b>	Beige	1/4	422, 460, 490, 544, 612, 632, 686
	<b>092.081.53.AF</b>	Beige	3/8	422, 460, 490, 632, 686, 688
	<b>092.081.53.AH</b>	Beige	1/2	422, 460, 490, 632, 686

# Individual parts – series 676 Easy-Clip

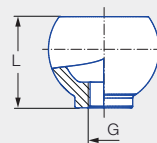
## ① Ball nozzle



Dimensions [mm]				
L <sub>1</sub>	L <sub>2</sub>	Ø D <sub>1</sub>	Ø D <sub>2</sub>	Flats
41.5	31.5	34.0	15.0	16.0

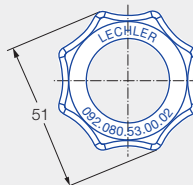
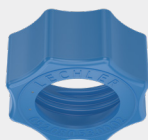
Designation	Spray angle	Ordering no. Type	Nozzle Color	V̇ [l/min]				
				p [bar]				
				0.5	1.0	1.5	2.0	2.5
Ball nozzle	60°	676.724.53.30.01	Grey	3.15	4.45	5.45	<b>6.30</b>	7.04
		676.764.53.30.01	Brown	4.00	5.66	6.93	<b>8.00</b>	8.94
		676.804.53.30.01	Purple	5.00	7.07	8.66	<b>10.00</b>	11.18
		676.844.53.30.01	Yellow	6.25	8.84	10.83	<b>12.50</b>	13.98
		676.884.53.30.01	Red	8.00	11.31	13.85	<b>16.00</b>	17.89
		676.904.53.30.01	Blue	9.10	12.87	15.67	<b>18.20</b>	20.35
		676.924.53.30.01	Green	10.00	14.14	17.32	<b>20.00</b>	22.36
Blind nozzle	–	092.080.53.00.01	Grey	–	–	–	–	–

## ② Ball joint



Designation	Ordering no.	Ball Color	BSPP	L [mm]	Matches series
	Type				
Ball joint	092.080.53.AD.01	Beige	1/4	32.4	422, 460, 490, 544, 612, 632, 686
	092.080.53.AF.01	Beige	3/8	31.4	422, 460, 490, 632, 686, 688
	092.080.53.AH.01	Beige	1/2	33.0	422, 460, 490, 632, 686

## ③ Retaining nut



Designation	Ordering no.
	Type
Retaining nut	092.080.53.00.02

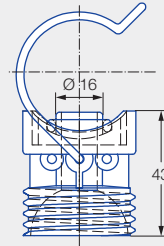


# ➤ Nozzle systems for surface treatment

## Series 676 Easy-Clip

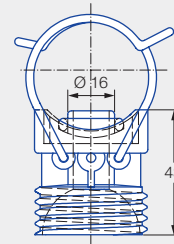
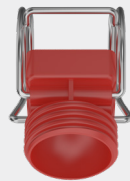
### ④ a Single clamp

092.08x.53.00



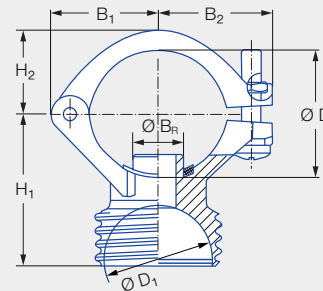
### ④ b Double clamp

092.09x.53.00



### ④ c Eyelet clamp

090.0x3.53.43.10



Designation	Ordering no.	Dimensions [mm]					$\varnothing B_R^1$ [mm]	Recommend- ed bore diameter [mm]	Pipe $\varnothing$ ( $\varnothing D$ ) [mm]	Weight [g]
		B <sub>1</sub>	B <sub>2</sub>	H <sub>1</sub>	H <sub>2</sub>	$\varnothing D_1$				
a Single clamp	092.080.53.00	–	–	–	–	–	16.3*	16.5–17.0	1" (32.0–34.5)	36.0
	092.081.53.00	–	–	–	–	–	16.3*	16.5–17.0	1 1/4" (40.0–43.0)	38.0
	092.082.53.00	–	–	–	–	–	16.3*	16.5–17.0	1 1/2" (46.0–49.0)	40.0
	092.083.53.00	–	–	–	–	–	16.3*	16.5–17.0	2" (58.0–62.0)	42.0
b Double clamp	092.090.53.00	–	–	–	–	–	16.3*	16.5–17.0	1" (32.0–34.5)	46.0
	092.091.53.00	–	–	–	–	–	16.3*	16.5–17.0	1 1/4" (40.0–43.0)	48.0
	092.092.53.00	–	–	–	–	–	16.3*	16.5–17.0	1 1/2" (46.0–49.0)	50.0
	092.093.53.00	–	–	–	–	–	16.3*	16.5–17.0	2" (58.0–62.0)	52.0
c Eyelet clamp	090.023.53.43.10	30.0	32.0	44.5	23.0	34.0	16.3**	16.5–17.0	1" (32.0–34.5)	48.0
	090.033.53.43.10	33.0	36.0	48.0	27.0	34.0	16.3**	16.5–17.0	1 1/4" (40.0–43.0)	50.0
	090.043.53.43.10	36.0	35.0	52.0	30.0	34.0	16.3**	16.5–17.0	1 1/2" (46.0–49.0)	52.0

\* Other spigot diameters (13.8/19.0 mm) available on request.

\*\* Other spigot diameters (13.8/20.0 mm) available on request.

<sup>1</sup>  $\varnothing B_R$  = spigot diameter.

